



**Welcome to
St Ives Infant School**



New starter pack





Dear Parents, Carers and families,

A warm welcome to our school, we are excited to welcome your child on their educational journey here with us at St Ives Infant School.

Inside this pack you will find information which will help you to get your child ready to start our school. We have included a 'Marvellous Me' sheet, which we ask that you fill in with your child to tell us all about them and what they enjoy doing.

Attached to this pack are several forms that you will need to complete prior to your child starting school. This ensures that school has all the correct information about your child in the event of an emergency.

If there is any information which you require that is not contained in this pack, please check our school website www.st-ives-inf.eschools.co.uk or contact our school office on **01736 796628** and we will be happy to help you.

We look forward to seeing you soon and welcoming you to our lovely school.

Mr Wigham
Head teacher





About our school



We are positioned in the iconic seaside town of St Ives in beautiful Cornwall. We arguably have the most unique and best view of all the schools in Cornwall as our playground and classrooms look out over St Ives bay.



We are a Nursery and Infant school and currently welcome children into our Nursery from 3 years old.

Our Nursery sessions are as follows:

Mornings: 8.45am to 11.45am

Lunch: 11.45 to 12.15pm

Afternoons: 12.15pm to 3.15pm

For more information on our nursery provision, please contact school and request a Nursery welcome pack.





About our school

We are a two form entry Infant school and can take up to 60 children in each year.

Our class structure is as follows:

Early Years Foundation Stage (EYFS)

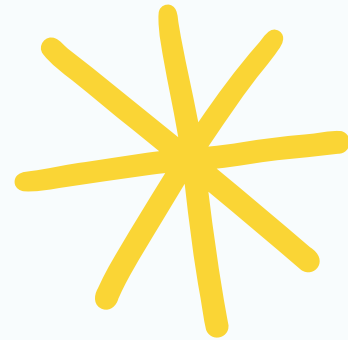
- Perran Class
- Porthmeor Class

Year 1

- Lamorna Class
- Kynance Class

Year 2

- Gwithian Class
- Godrevy Class



Our school day

Our classroom doors open at **8.35am** each day, with the register taken at **8.45am**. We encourage all our children to arrive on time to maximise their learning potential in school.

Lunch is from **12.00pm to 1.00pm** with all infant children receiving universal free school meals.

School finishes at **3.15pm** and children are collected from their classroom doors.



Parents and Carers are not allowed to park in our school car park. However, we do have an arrangement with Cornwall County Council so families can park at St Ives Leisure Centre for school drop off and collection each day. This is a 15 minute window to help support families.





School lunches

All children in EYFS, Year 1 and Year 2 receive free school meals as part of Government funding.

We are lucky enough to have an amazing school cook who serves nutritious home made meals everyday. Please see a sample weeks menu below.

Should your child not want to have a free school meal, they are welcome to bring a packed lunch from home.

Nursery children may also order a school meal if they wish, however these are chargeable at a cost of £2 per meal.

Week	MONDAY	TUESDAY	WEDNESDAY	THURSDAY	FRIDAY
Week 1	Pasta Day	Children's Favorites	Traditional Roast Day	Give it a go day	Chip Day
	Bacon and Roast vegetables Pasta Bake (celery, wheat) Cheesy Broccoli Pasta Bake (V) (dairy, wheat) Garlic bread (dairy/wheat) Carrots/sweetcorn Tomato salad Raspberry/choc muffins (wheat, egg, dairy) Yoghurt (milk) Fresh fruit salad Jelly pots	100% Beef Burgers (wheat) Vegi Burgers (V) (wheat, celery) Baps (wheat) Mixed veg medley Tomato Ketchup Potato wedges Sweetcorn salad Raisin oat cookies (wheat, dairy, egg) Jelly Fresh fruit & Yoghurt (milk)	Tender Roast Turkey Breast Quorn Sausages (wheat, soy) roast potatoes, stuffing (milk, wheat, celery) Yorkshire puddings (V) (milk, eggs, wheat) Gravy (wheat) Savoy cabbage Carrots/Swede Summer fruit crumble (wheat, dairy) Custard (dairy) Fresh fruit Yoghurts (milk)	Chicken Chow mein & Noodles (eggs, wheat) Veg chow mein & rice (gluten) Green beans/Carrots Cucumber salad Homemade Flat breads (wheat) Vanilla Sponge iced (egg, dairy, wheat) Fruit Jelly Yoghurts (milk)	Cod in batter (fish, wheat) Veggie nuggests (V) (wheat, celery) Chips Peas/beans Coleslaw (egg) Fresh fruit & Ice cream (dairy) Jelly pots Yogurt (milk)





Wrap around care

We offer wrap around care at St Ives Infant School from 7.45am until 5.15pm.

Our wrap around care is chargeable.

Our **breakfast club** runs from 7.45am to 8.45am
Cost £3.00 - this includes toast, bagels and cereals

Our **After school club** runs from 3.15pm to 5.15pm
3.15pm - 4.15pm - £3.50
3.15pm - 5.15pm - £6.00
4.00pm - 5.15pm - £3.50 (if attending an school after school club on the day)
All sessions include snacks and drinks.



Extra curricular clubs

We also offer **extra curricular clubs** each term that are run by members of staff in school.

These run from **3.15pm to 4.00pm** on different days of the week and change each term.

Details of the clubs available are sent out at the beginning of each term for parents and carers to sign their children up for.

These clubs are provided free of charge, unless stated otherwise.





School uniform



At St Ives Infant school we see our school uniform as part of our identity - making all our children feel proud to be part of our community and equal.

Our school logo uniform can be purchased from [Trophy Textiles](#) in Pool near Camborne. You can also buy all our uniform without a logo from any supermarket.

	Winter Uniform	Summer Uniform
Girls	Grey or black skirt/ pinafore or trousers. White polo shirt. School Sweatshirt or hoodie	Blue and white checked dress. School sweatshirt, cardigan or hoodie.
Boys	Grey or black trousers. White, polo shirt. School sweatshirt or hoodie.	Grey or black shorts or trousers. White polo shirt. School Sweatshirt or hoodie.

What do they wear for P.E.?

At St Ives Infant School we encourage children to come to school in their PE kit on the days they have PE so that they can maximise the time being active instead of getting changed.

Our school PE kit is dark shorts, jogging bottoms or leggings. A plain or school logo white PE t-shirt and plimsolls or trainers. Children may also wear a school hoodie or school jumper to keep them warm.



School uniform



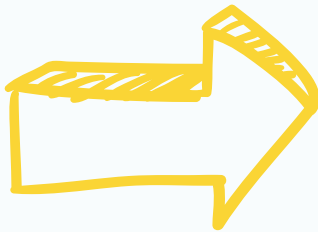
St. Ives Infant School
Sweatshirt



St. Ives Infant School
Cardigan



St. Ives Infant School
Hoodie



St. Ives Infant School White
Polo Shirt



St. Ives Infant School
Bookbag



St. Ives Infant School PE T-
Shirt



Black PE Shorts



St. Ives Infant School
Nursery T-Shirt



All school logo uniform can be purchased from
Trophy Textiles at Pool, near Camborne
www.trophytextiles.co.uk





ParentPay



We aim to offer a cashless payment system in school.

We currently use a company called ParentPay for families to pay for items in school. Through this online system you will be able to:

- Book and pay for wrap around care
- Pay for school trips or residential
- Consent to your child attending school trips
- Pay for PTA events
- Make contributions to charity events

Once your child is registered in school, our office staff will be able to help set you up with an account.

Pastoral care and SEND

At St Ives Infant school we currently employ a Family Liaison Officer (FLO) who is available to support families and children in many different ways within school. For example, we are able to offer support with attendance, emotional well being, mental health and behavioral concerns, as well as sign post families to outside support agencies.

We also have a SENCo in school who is able to offer support with any specific learning needs that your child might have.

Please make contact with the school office should you feel you need support in either of these areas and we will happily talk with you about it.





Rainbow MAT

St Ives Infant School is proud to be part of the **Rainbow Multi Academy Trust** which comprises eleven primary schools across Cornwall:

Bishop Bronescombe, Grampound Road, Grampound with Creed, Ladock, Penponds, St Ives Infant, St Meriadoc CE Infant, St Meriadoc CE Junior, St Michael's, Troon and Veryan.



The Rainbow Multi-Academy Trust aims to build a brighter future for all. It puts children first, looking to provide them with a truly outstanding, inspirational and inclusive world-class education.



Our Trust Values

Ambitious- always have high expectations and aspirations for everyone; learning from the best and having an optimistic outlook

Empowering- believing and investing in our people; developing talent and potential; celebrating diversity and individuality: working collaboratively and celebrating achievement

Ethical- doing what is right and challenging what is wrong; showing kindness and compassion; promoting wellbeing and sustainability





Marvellous Me!

My name is



I am

years old

My favourite colour is



My favourite food is

At home I enjoy



Tell us something you are looking forward to about starting at our school...



Is there anything you are worried about before starting at our school?

